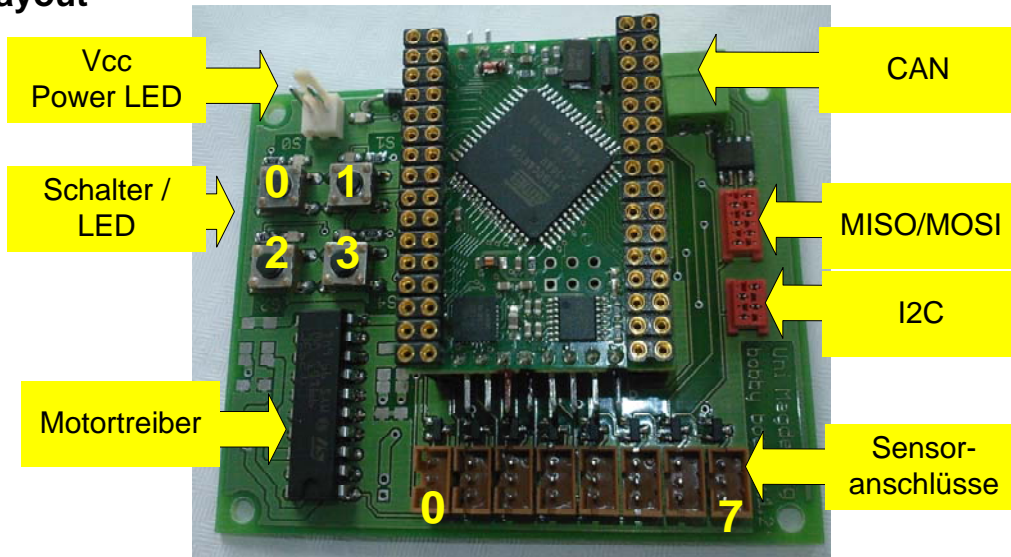


### 1) Layout



### 2) PIN Belegung

Steckverbinder



+5V (schaltbar)  
 GND (Masse)  
 Signal  
 Die Schaltausgänge  
 schalten 5V bei max.  
 100mA !!

Stecker	Signal	Vcc	
	Port, Pin	Port, Pin	
C0	F, 0	C, 0	ADC0
C1	F, 1	C, 1	ADC1
C2	F, 2	C, 2	ADC2
C3	F, 3	C, 3	ADC3
C4	F, 4	C, 4	ADC4
C5	F, 5	C, 5	ADC5
C6	D, 2	C, 6	INT2
C7	D, 3	C, 7	INT3



Leds

LED	Port, Pin
L0	A, 0
L1	A, 1
L2	A, 2
L3	A, 3



Taster

Taster	Port, Pin
S0	A, 4
S1	A, 5
S2	A, 6
S3	A, 7

Motortreiber  
 L293N

Input	Port, Pin
PWM_1	B, 5
PWM_2	B, 6
Motor_1A	E, 2
Motor_1B	E, 3
Motor_2A	G, 0
Motor_2B	G, 1